

# DEMA<sup>®</sup> SPRAY CLEAN DISPENSERS

## MODEL 605T

### INSTALLATION INSTRUCTION



The 605T Spray Clean Dispenser is used in any application where a chemical product must be sprayed or foamed without the use of compressed air or a high pressure pump. City water pressure and optional spray gun and foam wand attachments create the correct amount of pressure and foam for cleaning in food service applications such as supermarket meat rooms, deli areas and seafood departments. The 605T is a single chemical product system that includes an additional station for clear water rinsing.

- PVC manifold for hard water resistance
- Polypropylene injector for chemical resistance
- Polypropylene cover offers neat appearance
- Stainless steel back plate offers secure mounting and durability
- Large ball valve knobs for easy on/off action

#### 1. PARTS CHECKLIST:

ITEM	DESCRIPTION	QTY.
A.	Spray Clean Assembly	1
B.	¼" ID X 8' Long Vinyl Supply Tubing & Foot Strainer Assembly	1
C.	Ceramic Weight	1
D.	Metering Tip Kit	1
E.	#10 Screw & Anchor Kit Set (Total: 4 Screws & 4 Anchors)	1
F.	Gummed Label	1

#### 2. INSTALLATION:

This product is designed only to be used as described in this instruction sheet. Adhere to all warnings and cautions identified in this document.	
	<p><b>WARNING:</b> Installations must conform to all local and national plumbing codes and use approved backflow prevention and pressure relief devices where required.</p> <p><b>ALWAYS DISCONNECT DISPENSER FROM WATER SOURCE WHEN DISPENSER IS NOT IN USE.</b></p>
	Always read SDS for all chemicals used and follow personal protective guidelines.

**WARNING: Water supply pressure should not exceed 125 PSI. Water temperature must not exceed 150° F.**

#### A. Mounting and Water Supply:

Locate mounting holes on a permanent vertical wall. Drill all of the holes into the dry wall using a ¼" diameter bit for use with the included #10 screw and anchor set. (If mounting the Spray Clean to wood and do not plan to use the included anchors, drill 1/8" diameter holes.) Insert the anchors into drilled holes and hammer them into the wall until they are flush with face of wall. Assemble the #10 screws with a phillips screw driver into the anchors for the keyhole slots so the screw heads are sticking out of the wall approximately ½". Mount the Spray Clean by inserting the screw heads through the keyhole slots in the back plate and tightening the screws. Secure the unit by inserting screws into the lower 2 holes and tightening the screws.

The water inlet is equipped with a female garden hose fitting. The fitting may be removed to permit direct connection to 3/8" NPT pipe.

# DEMA<sup>®</sup> SPRAY CLEAN DISPENSERS

## MODEL 605T

### INSTALLATION INSTRUCTION

**B. Outlet Connection:**

Connect the discharge hose to the outlet garden hose fitting. Spray gun, spray nozzle or foaming wand may be used on the hose outlet. **Note: The Spray Clean is designed to operate with nozzle flow rates not less than 4 GPM total at 40 PSI.** When a spray gun or nozzle is used, hose lengths must not exceed those shown in Table 1. Hoses, spray gun and foam wand are available through DEMA. See the parts list on page 5 under Optional Accessories for various styles.

**TABLE 1**

Hose I.D.	3/8"	1/2"	5/8"
Max. Length	15 ft.	50 ft.	100 ft.

**C. Chemical Supply:**

**WARNING: Use care when handling hazardous material.**

Place the chemical container in a convenient location not more than six feet below the Spray Clean. (Greater lifts will reduce injection capabilities.) The top of the container should not be above the Spray Clean. Cut the vinyl tubes to any convenient length that will allow the tubing to reach the bottom of the container. Drop the tubing end with the strainer into the chemical container. Push the other end over the chemical inlet barb located on the side of the unit.

**3. FEED RATE ADJUSTMENT:**

The chemical feed rate is controlled by a metering tip screwed into the hose barb of the injector on the side of the unit. The feed rates can be changed by using different sized metering tips. To select the proper sized metering tip for the desired dilution ratio, refer to Table 2.

**TABLE 2**  
**METERING TIP SELECTION CHART**  
**FLUID DILUTION RATIOS**  
**METERING TIP KIT (100-15K)**

Metering Tip Color	Injection Rate for Viscosities Shown					
	1 cps		75 cps		200 cps	
	Oz/Gal	Ratio	Oz/Gal	Ratio	Oz/Gal	Ratio
Tan	0.40	320-1	0.25	512-1	0.20	640-1
Orange	0.50	256-1	0.35	366-1	0.25	512-1
Turquoise	0.70	183-1	0.50	256-1	0.35	366-1
Pink	0.95	135-1	0.65	197-1	0.45	284-1
Clear	1.30	98-1	0.80	160-1	0.55	233-1
Brown	1.50	85-1	0.90	142-1	0.60	213-1
Red	1.90	67-1	1.00	128-1	0.70	183-1
White	2.20	58-1	1.30	98-1	0.80	160-1
Green	2.60	49-1	1.50	85-1	0.90	142-1
Blue	3.20	40-1	1.75	73-1	1.00	128-1
Yellow	4.85	26-1	2.25	57-1	1.10	116-1
Black	6.50	20-1	2.40	53-1	1.15	111-1
Purple	9.20	14-1	2.70	47-1	1.20	107-1
Gray	10.40	12-1	2.85	45-1	1.25	102-1
No Tip	12.80	10-1	3.50	37-1	1.55	83-1

**All injection ratios are based on 40-PSI inlet water pressure and a water flow rate of 2.8 GPM.**

**Note: Leaner dilutions are available using DEMA metering tip kit #100-15KU or capillary tip #44-61P**

# DEMA<sup>®</sup> SPRAY CLEAN DISPENSERS

## MODEL 605T

### INSTALLATION INSTRUCTION

#### 4. OPERATION:

The Spray Clean permits the operator to select chemical or clear water by opening and closing the appropriate valve. When inducting chemical, the clear water valve needs to be in the closed position. If the clear water valve is open, the injector will not induct any chemical. When using a spray gun or foaming wand make sure that the gun on the end of the hose is in the fully open position when inducting chemical.

#### 5. SERVICING:

**CAUTION: Turn off water supply before servicing.**

##### A. If unit fails to draw chemical:

1. Is more than one valve open?
2. Is the hose too long? (See Table 1)
3. Is the gun or nozzle sized properly? (Refer to Section 2) Remove gun and/or nozzle and turn on water. If the injector inducts chemical, the gun and nozzle are improperly sized.
4. Is the metering tip blocked? Remove tip and clear blockage.
5. Is the hose kinked or otherwise obstructed.
6. Is the spray gun fully open?

##### B. If unit stops drawing chemical:

1. Is the foot strainer clogged? Lift from drum and clean.
2. Is the spray nozzle partially clogged? Remove and clean.
3. Is the metering tip blocked? Remove and clean.
4. Is the injector check valve clogged? Unscrew the four cover screws to take the Spray Clean unit off the wall. Remove the two ball valve handles to separate the cover from the manifold. Remove the square plastic metering knob to inspect the check valve ball, spring and o-ring.

**CAUTION: WHEN SERVICING UNIT BE SURE THAT REPLACEMENT PARTS HAVE BEEN INSTALLED ACCORDING TO DRAWING. BE CERTAIN CHECK VALVE PARTS ARE IN PLACE.**

**RETURNS: NO MERCHANDISE MAY BE RETURNED FOR CREDIT WITHOUT DEMA'S WRITTEN PERMISSION. RETURN MERCHANDISE AUTHORIZATION NUMBER REQUIRED IN ADVANCE OF RETURN.**

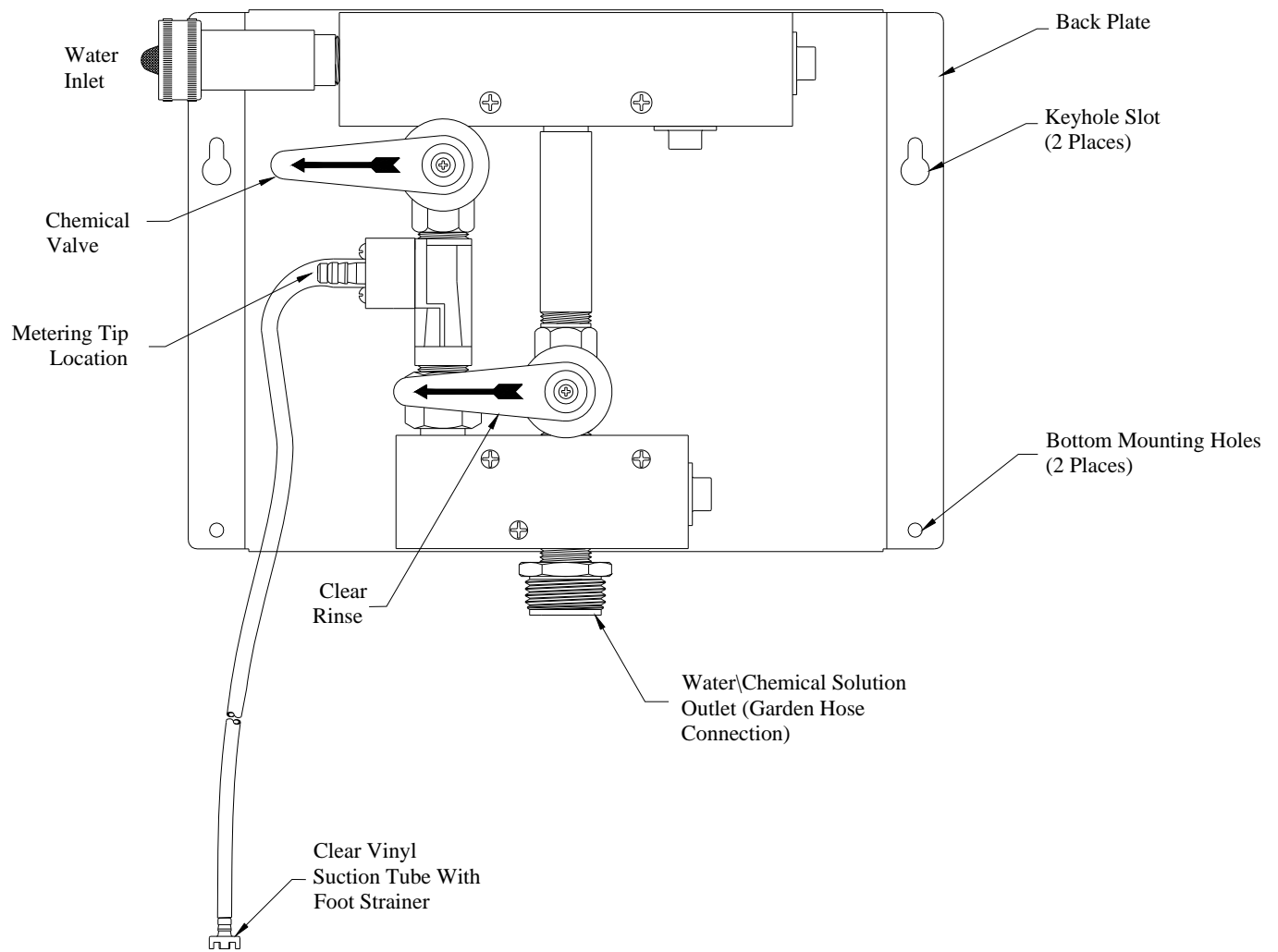
**WARRANTY:** DEMA products are warranted against defective material and workmanship under normal use and service for one year from the date of manufacture. This limited warranty does not apply to any products, which have a normal life shorter than one year or failure and damage caused by chemicals, corrosion, improper voltage supply, physical abuse, or misapplication. Rubber and synthetic rubber parts such as "o"-rings, diaphragms, squeeze tubing and gaskets are considered expendable and are not covered under warranty. This warranty is extended only to the original buyer of DEMA products. If products are altered or repaired without prior approval of DEMA, this warranty will be void.

Defective units or parts should be returned to the factory with transportation prepaid. If inspection shows them to be defective, they will be repaired or replaced without charge, F.O.B. factory. DEMA assumes no liability for damages. Return merchandise authorization number, to return units for repair or replacement, must be granted in advance of return.

# DEMA<sup>®</sup> SPRAY CLEAN DISPENSERS

## MODEL 605T

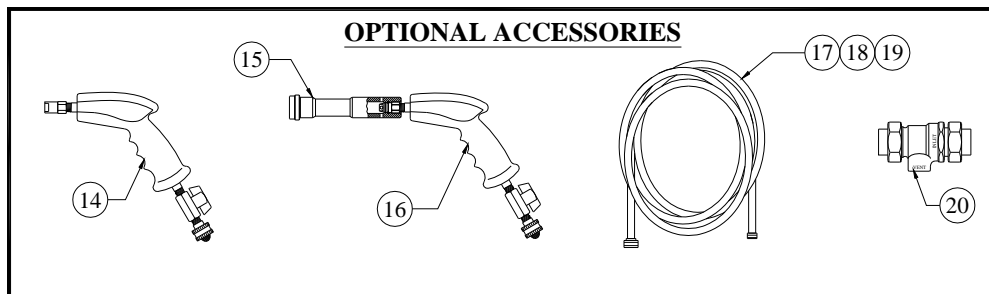
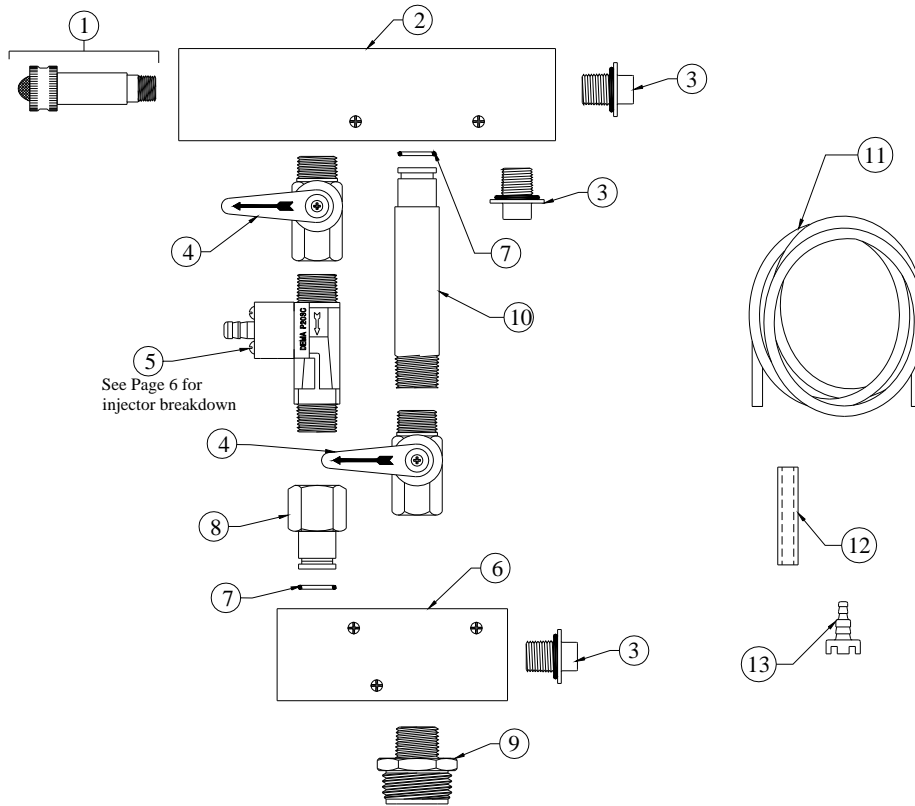
### INSTALLATION INSTRUCTION



# DEMA<sup>®</sup> SPRAY CLEAN DISPENSERS

## MODEL 605T

### INSTALLATION INSTRUCTION



NO.	PART NO.	DESCRIPTION
1	63-32-2	Water Inlet
2	69-8-1	Top Manifold
3	66-153	Pipe Plug & O-Ring Assy.
4	60-60 65-2	Ball Valve w/Handle or Ball Valve 3/8" NPT
5	P203CTC	Injector
6	69-5-1	Bottom Manifold
7	30-5-14	O-Ring (EP)
8	69-9-1	Adapter
9	65-18-1	Outlet Fitting
10	58-83-1	Pipe Adapter
11	100-12	Vinyl Tubing 1/4 ID X 8' Lg.
12	61-107-2	Ceramic Weight
13	24-11MP	Foot Strainer

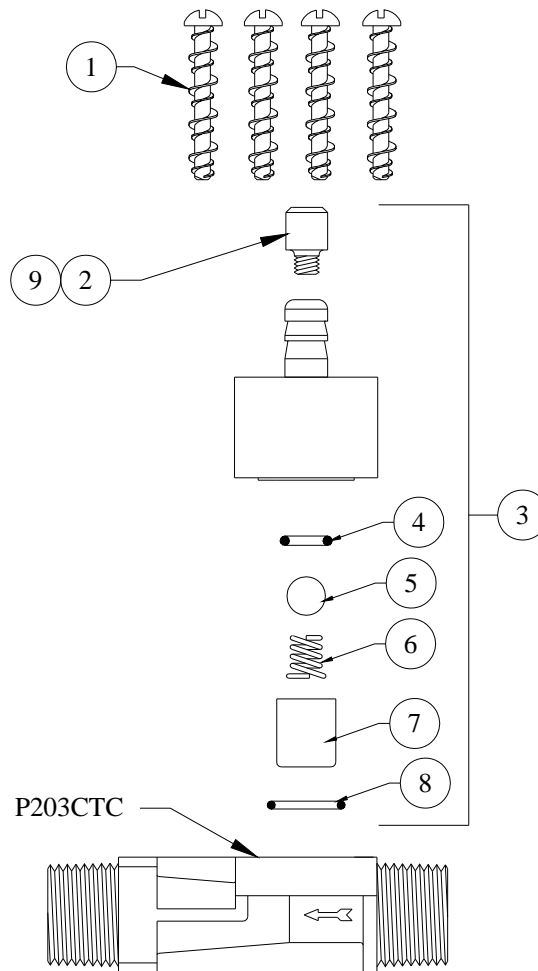
OPTIONAL ACCESSORIES		
NO.	PART NO.	DESCRIPTION
14	40-14HD	Heavy Duty Spray Gun
15	292QD	Foam Wand W/ Disconnect
16	40-14QD	Heavy Duty Spray Gun W/ Disconnect
17	44-3	1/2 ID X 25' Hose (Black)
18	44-3RW	1/2 ID X 25' Spring Garden Hose (Red)
19	44-3W	1/2 ID X 25' Hose (White)
20	44-89	Backflow Preventer (A.S.S.E. 1012)

# DEMA<sup>®</sup> SPRAY CLEAN DISPENSERS

## MODEL 605T

### INSTALLATION INSTRUCTION

## P203CTC INJECTOR BREAKDOWN



NO.	PART NO.	DESCRIPTION
1	24-67	Screw (Req'd 4)
2	100-15-	Metering Tip (Specify Color)
3	24-62-SP	Check Valve Repair Kit
4	25-25S	O-Ring
5	24-24P	Check Valve Ball
6	24-23-2	Check Valve Spring
7	24-34-7	Check Valve Core
8	25-29S	O-Ring

NO.	PART NO.	DESCRIPTION
9	100-15K	Metering Tip Kit