

PRO MANUAL LAUNDRY SYSTEM ONE TO THREE PUMP DISPENSER

The Pro Manual Laundry System is a one to three pump push button operated chemical dispenser. The system requires a 110-volt outlet for the power and each pump produces approximately 18 ounces per minute (additional outputs listed under run time & calibration). This system allows the installer to engage a lockout by snipping out the resistor on each board, see the section on LOCKOUT for further information.

MOUNTING & INSTALLATION

1. **MOUNTING & POWER SUPPLY** - Use the screws and anchors provided to mount the unit. Make sure that the unit is within reach of 110-volt outlet. Plug the unit in but do not turn it on.

Select a location for the remote box that will allow accessible control of the unit for the end user. Use the double stick tape on the back or open the remote box to gain access to the two bosses inside. If you choose to use the two internal mounting holes with the screws and anchors provided, be careful not to loosen any of the electrical connections inside.

2. **TUBING** - Measure and cut a piece of supply tubing to go between the dip tube and the intake (left) side of the pump. Use the compression nuts provided to secure the tubing. Measure and cut a piece of supply tubing to go between the output (right) side of the pump(s) and the laundry machine. Use the compression nut on the output side of the pump(s) to secure the line.
3. **RUN TIME ADJUSTMENT & CALIBRATION** - There are two boards used in these units, a PRO 2034 and a PRO 2035. The PRO 2034 board has a power switch, a power indicator light, and a fuse. All other controls on the boards are identical.

SEE THE CONTROL BOARD LAYOUT FOR ADDITIONAL INFORMATION

There are two potentiometers for run time control. They are in the center of the board, near the top, and marked underneath each. The bottom potentiometer controls a run time of 0 - 180 seconds. The top potentiometer controls a run time of 0 -25 seconds. For longer run times, use the bottom potentiometer and fine-tune the run time with the 0-25 second control. **REMEMBER THAT THESE UNITS PUMP APPROXIMATELY 18 OUNCES PER MINUTE with 1/4" tubing using a 120 RPM motor.**

Motor	Tube	Output per minute
120 RPM	3/8"	~24 oz.
30 RPM	1/4"	~ 4 oz.
30 RPM	3/8"	~ 6 oz.

4. **SETUP - PRIMING - CHECKING RUN TIME**- The three-position switch in the bottom right hand corner of the board controls the main function you will need during the installation.

Left Hand Position - Pump Priming. The pump will prime if the switch is in this position.

Center Position - Run. Once the installation is complete, run times have been checked, and you are ready to leave, **THE SWITCH MUST BE IN THE CENTER POSITION TO OPERATE.** The board will recognize a trigger from the remote box and run the pump in this position.

Right Hand Position - Verify run time. Move the switch to the right-hand position and either time the pump run or hold a measuring cup under the correct pump. Once the run is complete, **MOVE THE SWITCH BACK TO THE CENTER POSITION.** If the run time needs to be adjusted, do it now. Once the adjustment has been made, move the switch back to the timed position to verify the new run time. Again, return the switch to the center position once calibration is complete.

5. LOCKOUT - HOW TO ENGAGE - WHAT DOES IT MEAN?

*****MAKE SURE THAT THE POWER SWITCH IS OFF BEFORE ENGAGING LOCKOUT*****

All units arrive without a lockout. This is intended to speed up the installation for those who will be using the lockout. Once the unit is installed, all tubing is run, pumps are primed AND run times have been set and verified, the lockout should be engaged.

WHAT WILL THE LOCKOUT DO? Once the lockout is engaged for the pump(s) the following will occur: If a user presses the remote button and triggers Pump #1, the pump will run the length of time that you set during installation. Now a lockout begins for approximately three minutes during which the user cannot start the pump again. If the button is pressed again during the three-minute lockout, the clock is reset, and they must wait another three minutes until soap can be dispensed from the pump. For example, if the operator presses the button 4 times during the lockout, the lockout will now last ~ 12 minutes.

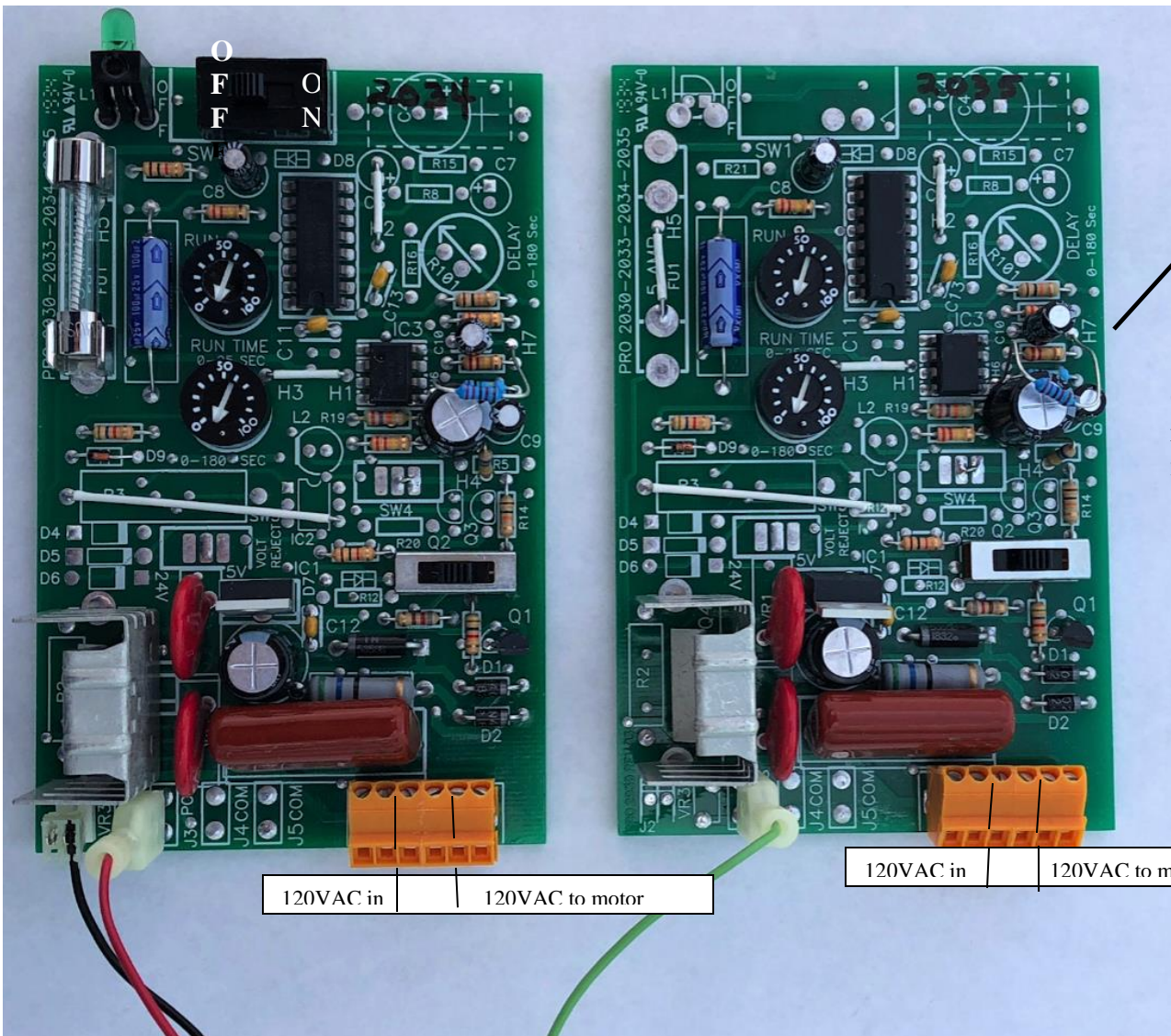
TO ENGAGE THE LOCKOUT – Turn the unit power switch to the OFF position. Unplug the unit from the wall. Refer to the board drawing for this resistor location. Cut one of the side leads of the **HIGH** resistor to engage the lockout, location H6 or H7.

KEEP IN MIND - Once the lockout has been engaged, it affects the verify run time position. That is, if the installer wants to change the run time of the pump with lockout and verify time or quantity, the installer will have to wait the full three minutes after triggering the pump with the switch or remote before being able to dispense again. **THE SAFEST BET IS TO WAIT A FULL 3 1/2 MINUTES BEFORE RETRIGGERING JUST TO BE SURE.**

BEFORE LEAVING THE INSTALLATION:

1. Make sure that all the three position switches are in the center position and that the green power indicator light on the front of the lid is lit to indicate power is on.
2. If you have engaged the lockout on the unit, make the end user(s) aware to avoid unwanted trouble calls.

Pro Manual Main (left) and Secondary (right) Board

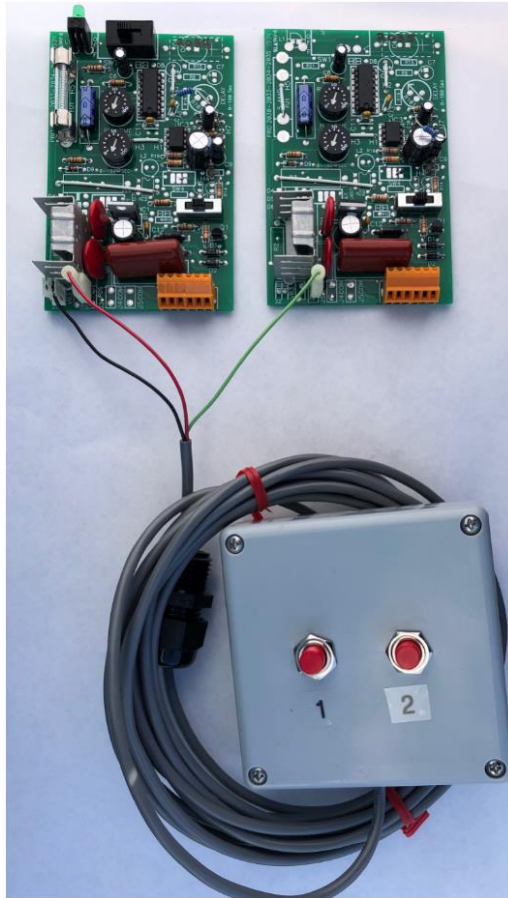


120VAC in	120VAC to motor
-----------	-----------------

120VAC in	120VAC to motor
-----------	-----------------

Cut one leg of HIGH resistor to engage 3-minute lockout

Remote Box Layout



WARRANTY

Viking LLC, A DEMA Company products are warranted against defective material and workmanship under normal use and service for one year from the date of manufacture. This limited warranty does not apply to any products which have a normal life shorter than one year or failure and damage caused by chemicals, corrosion, improper voltage supply, physical abuse or misapplication. Rubber and synthetic rubber parts such as “O” rings, diaphragms, squeeze tubing and gaskets are considered expendable and are not covered under warranty. This warranty is extended only to the original buyer of Viking LLC products. If the products are altered or repaired without prior approval of Viking LLC, this warranty will be void.

Defective units or parts should be returned to the factory with transportation prepaid. If inspection shows them to be defective, they will be repaired or replaced without charge, F.O.B. factory. Viking LLC assumes no liability for damages. Return Merchandise Authorization (RMA) number to return units for repair or replacement must be granted in advance of return.